



Brent Hislop (612) 590-0811  
 brent.hislop@SynergyLandCompany.com  
 www.SynergyLandCompany.com

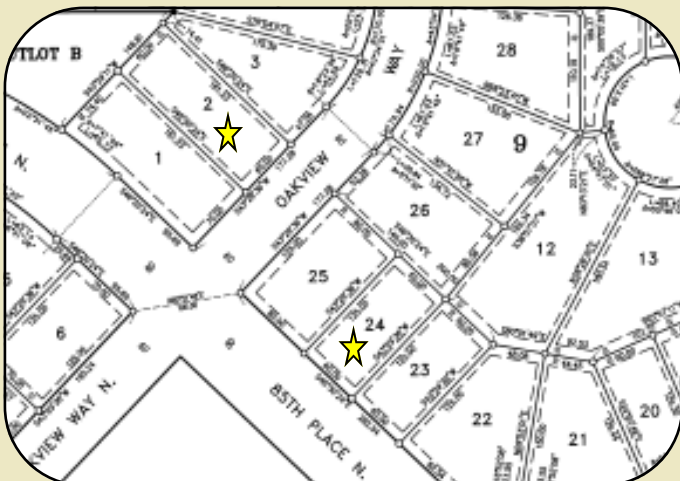
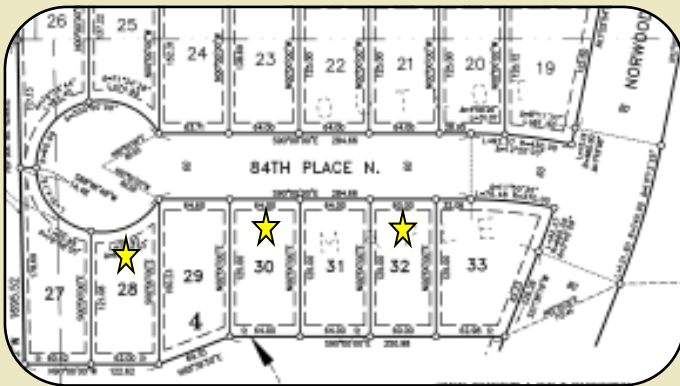


#2 in MONEY's 2014  
 "Best Places to Live in America"

# Lakes at Maple Grove

## Developed Lots

( Address: 12641 84th Place North, Maple Grove )



• **Lot Summary:**

- Developed, build/permit ready lots in newer neighborhood
- Lot width: 60'-64' wide with pre-approved home plans available (32'/36' wide with rear load garages)
- Lookout & full basement elevations
- Existing homes in project selling @ mid-\$400k's
- Easy I-694 access at Weaver Lk. & Hemlock
- Proximate to Arbor Lakes & other retail

- **Award-winning Schools:** Education is a priority in Maple Grove. ISD #279 with Maple Grove Middle School & Maple Grove High School.

- **Strong Demand & Low Inventory:** This area has demonstrated high-demand for new home construction with low lot inventory.

- **Pricing:** \$115k – \$125k per lot. Seller participation potential. Please call for add'l information.

